



CHINA CUSTOMS BROKERS ASSOCIATION

CHINA CUSTOMS BROKERS ASSOCIATION

General Export Procedures to China

Ph.D. Xuchen, CCBA & UIBE

CONTENTS

- 1 Overview
- 2 General Procedures
- 3 Obtain Information
- 4 Key Changes for the Epidemic

Q & A



Overview

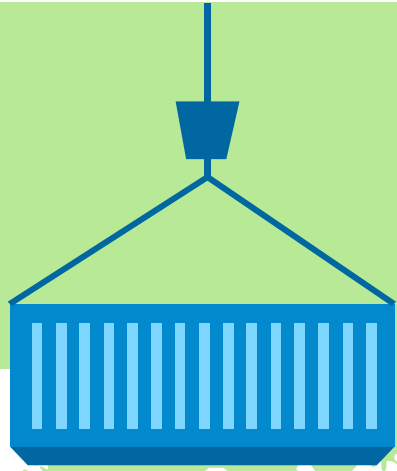
1.1 The problem you are concerned about



Fast and convenient trade process

- Why the procedures are important?
- The key of procedures is the accurate transmission of information.

1.2 Some changes in China



A

lower trading costs and higher level of trade facilitation

B

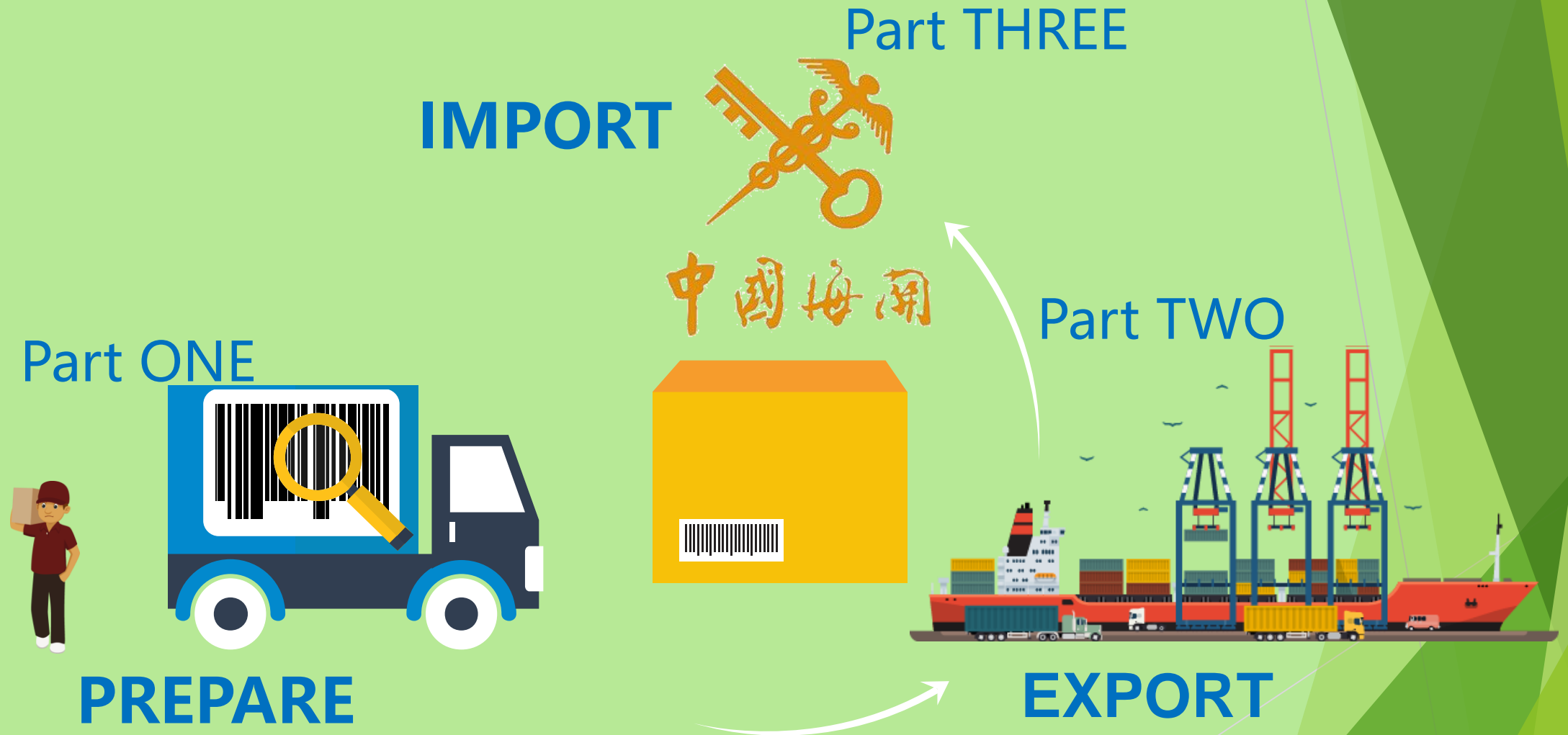
service-oriented government, Customs: verify and trust

C

exporter and importer: more risks regarding compliance



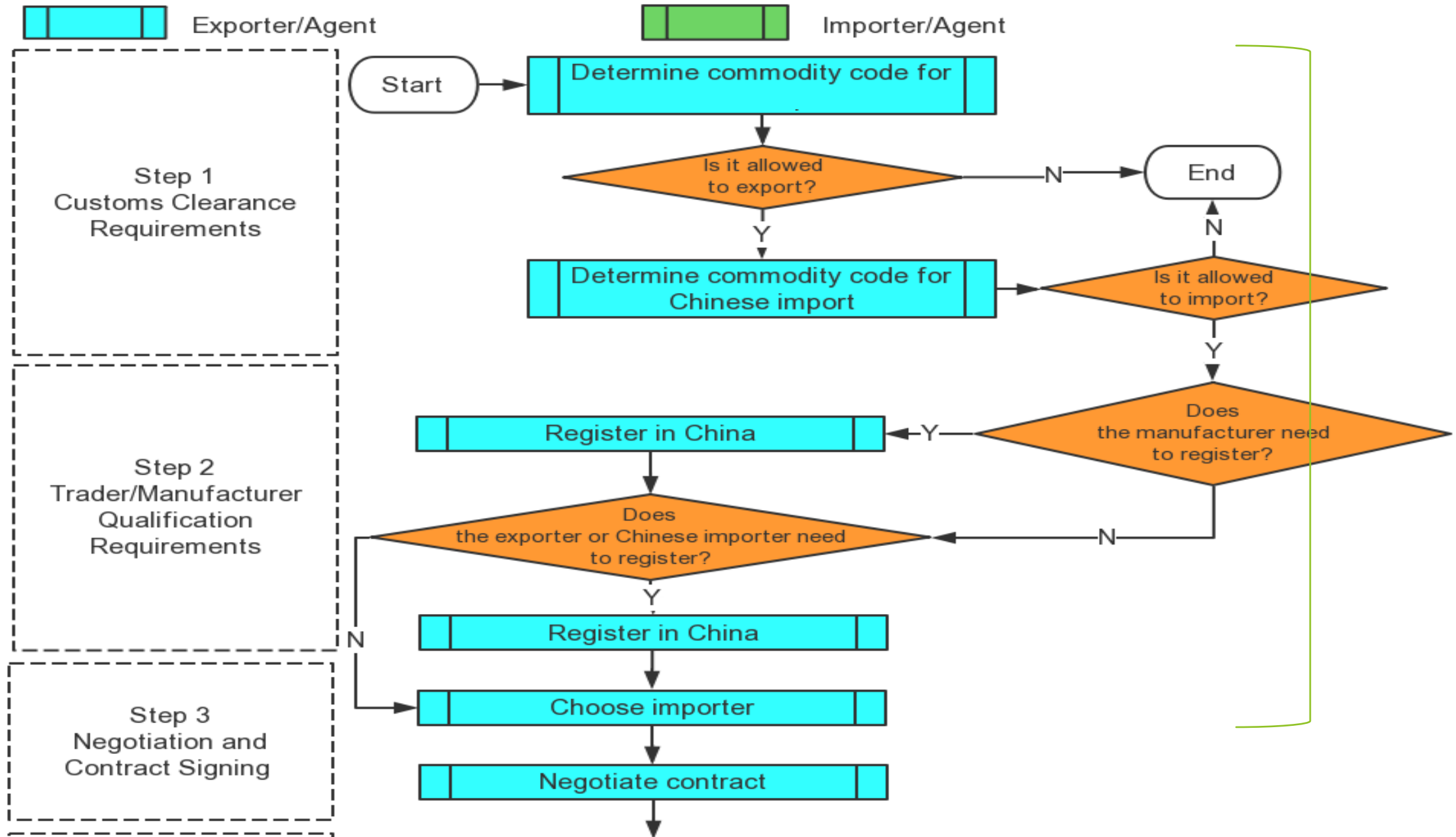
1.3 A simple but important framework

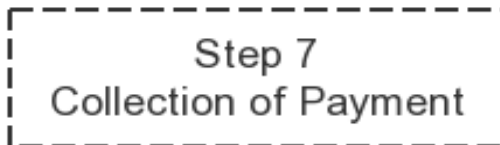




General Procedures

PART ONE





Review Letter of Credit or confirm receipt of deposit

Produce/prepare goods

Inspect and package

Handle cargo transportation

Insure cargo transportation

Released by customs

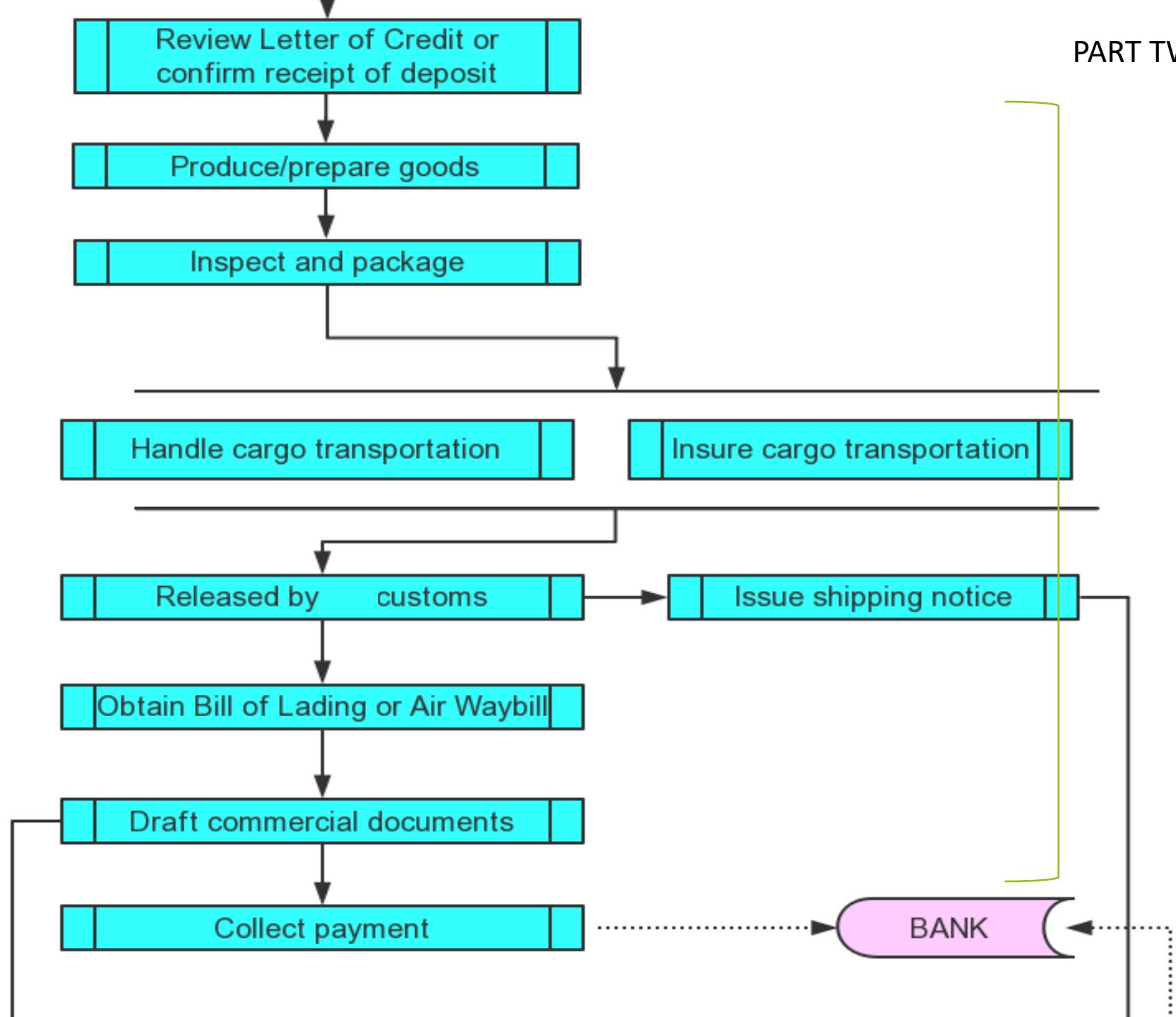
Issue shipping notice

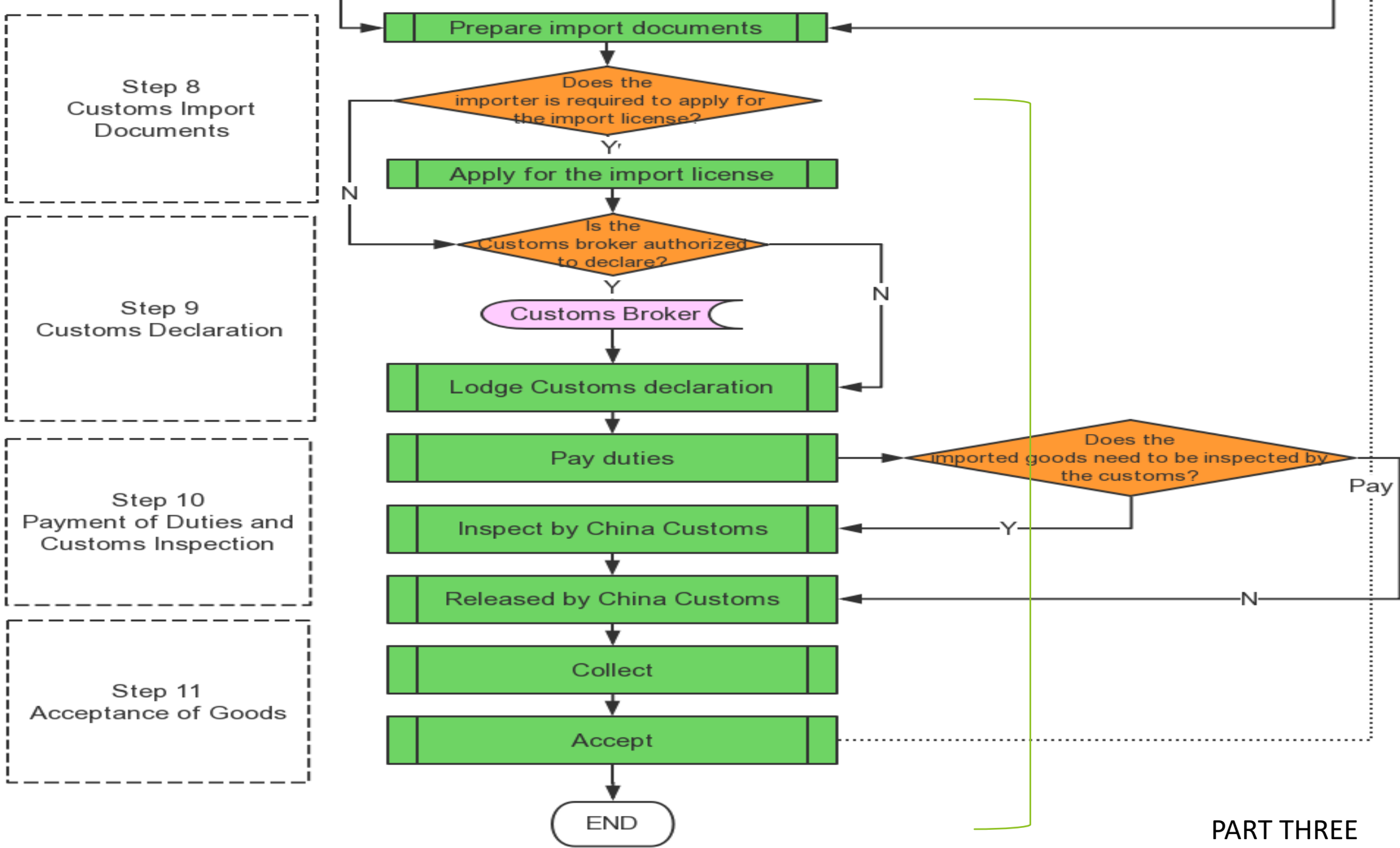
Obtain Bill of Lading or Air Waybill

Draft commercial documents

Collect payment

BANK







Obtain Information

▶ Step 1 Customs Clearance Requirements

▶ 2. Determining commodity codes for Chinese imports and clarifying official requirements

- a. You can find commodity codes for imports [here](#).
- b. Ensure compliance with official requirements for goods imported to China, with particular emphasis on the following three categories of commodities:

▶ Prohibited imports

- ▶ See catalog on <http://www.mofcom.gov.cn/>. The catalogs are updated on an ad hoc basis.

▶ Restricted imports

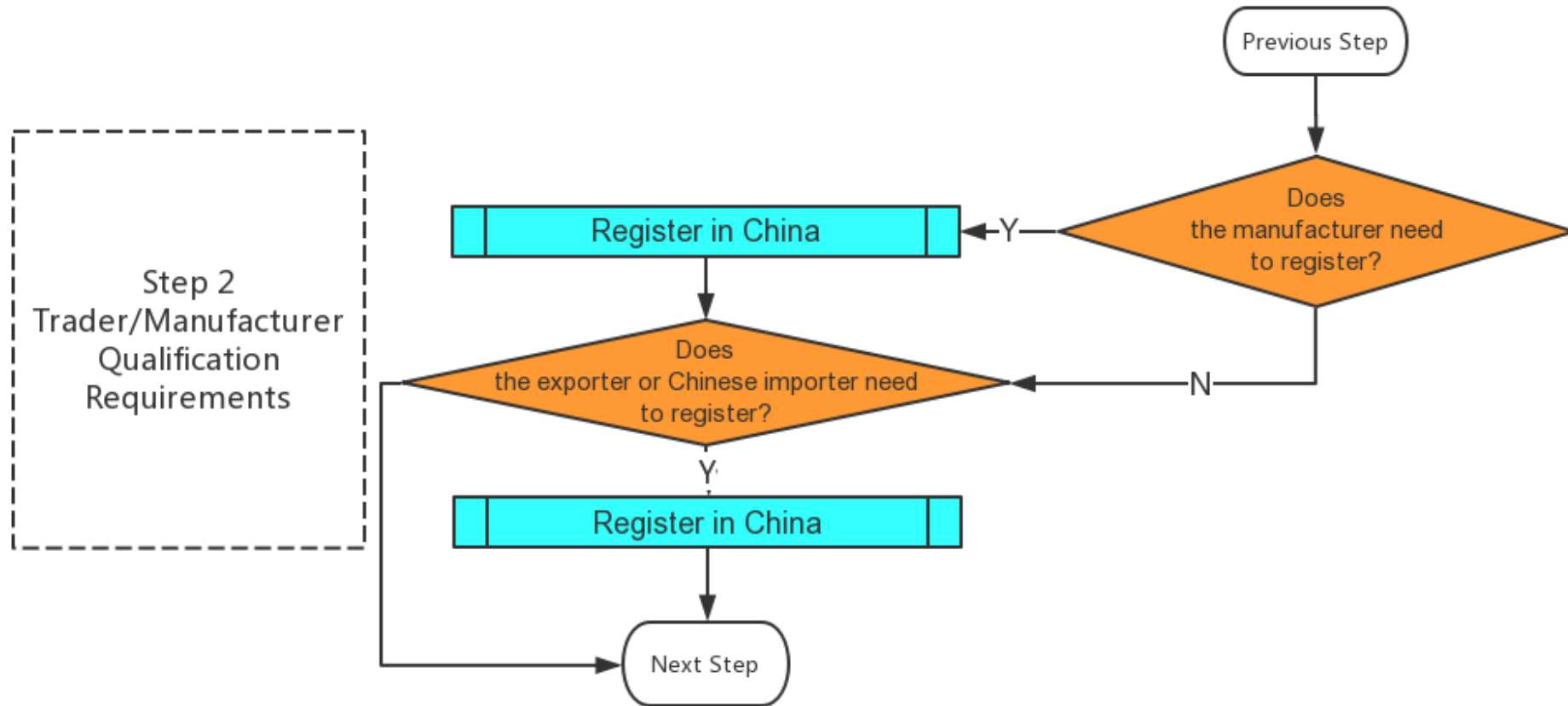
- ▶ If you want to import restricted goods to China, you must first obtain an import license. Application for the import license is free of charge.
- ▶ See catalog on <http://www.mofcom.gov.cn/>.
- ▶ The above catalogs are updated annually.

▶ Other control requirements

- ▶ Certain goods such as household appliances, electronic products, toys, fire safety equipment and auto parts must receive a China Compulsory Certificate (CCC) label before you are permitted to import them. The catalog of products subject to these

requirements can be found [here](#). Official, free, Chinese. (click the “commodity description and classification” on the left-hand side)

► Step 2 Trader/Manufacturer Qualification Requirements



1. Overseas manufacturer registration

- ▶ Manufacturers of certain commodities must be registered with China Customs or another government department before their goods can be exported to China.
- ▶ Click [here](#) to look up registration information of manufacturers of foods (including dairy, seafood and meat products) and cosmetics based outside of China, or to register a manufacturer.
- ▶ Note that registering a manufacturer will take time. If you are planning to buy goods from a foreign manufacturer and export them to China, we recommend that you first check the manufacturer's registration information. If the manufacturer is not yet registered, you should request the manufacturer to register as soon as possible to avoid delays in exporting your product.

2. Trader information registration

- ▶ Exporters and/or Chinese importers of certain products must first register with China Customs before shipping the goods.
- ▶ Click [here](#) to look up registration information of traders and/or Chinese importers of food (including dairy, seafood and meat products) and cosmetics or to register a trader and/or Chinese importer.



Key Changes for the Epidemic

- ▶ KEY 1: Emergency response mechanism for public health LEVEL 1
- ▶ KEY 2: In addition to the control measures for entry and exit personnel, regarding the import of goods:
 1. according to the relevant laws of China, **all personnel, vehicles, transportation equipment, and baggage, cargo, postal parcels and other items from the epidemic area** need to be sanitary quarantine.
 2. Above items shall be allowed to enter or leave the country **with the permission of the frontier health and quarantine agency (customs).**
- ▶ KEY 3: **Cold chain and high-risk non-cold chain cargo**
 1. **Detailed report pre-arrive (foreign nucleic acid test certificate and disinfection certificate)**
 2. **Local port disinfection**
 3. **Sampling test - If the sample test result is positive, the government/ customs must immediately activate the emergency**
 4. **Relevant transportation vehicles and personnel**